



announcing

Sapphire Princess[®]

winter 2020 season in australia



DEPARTING SYDNEY | FREMANTLE | BRISBANE | ADELAIDE | MELBOURNE

Biggest ever Australian deployment for Princess®

Sapphire Princess® will be arriving in May 2020 for an extended season of cruises featuring new sailings and Princess® most popular Australian itineraries.

There's never been a better time to explore our beautiful country. Choose your departure city – **Sydney, Brisbane, Melbourne, Adelaide or Perth (Fremantle)** and enjoy lazy sea days and discoveries in each destination. Have time to connect with your loved ones and new friends.

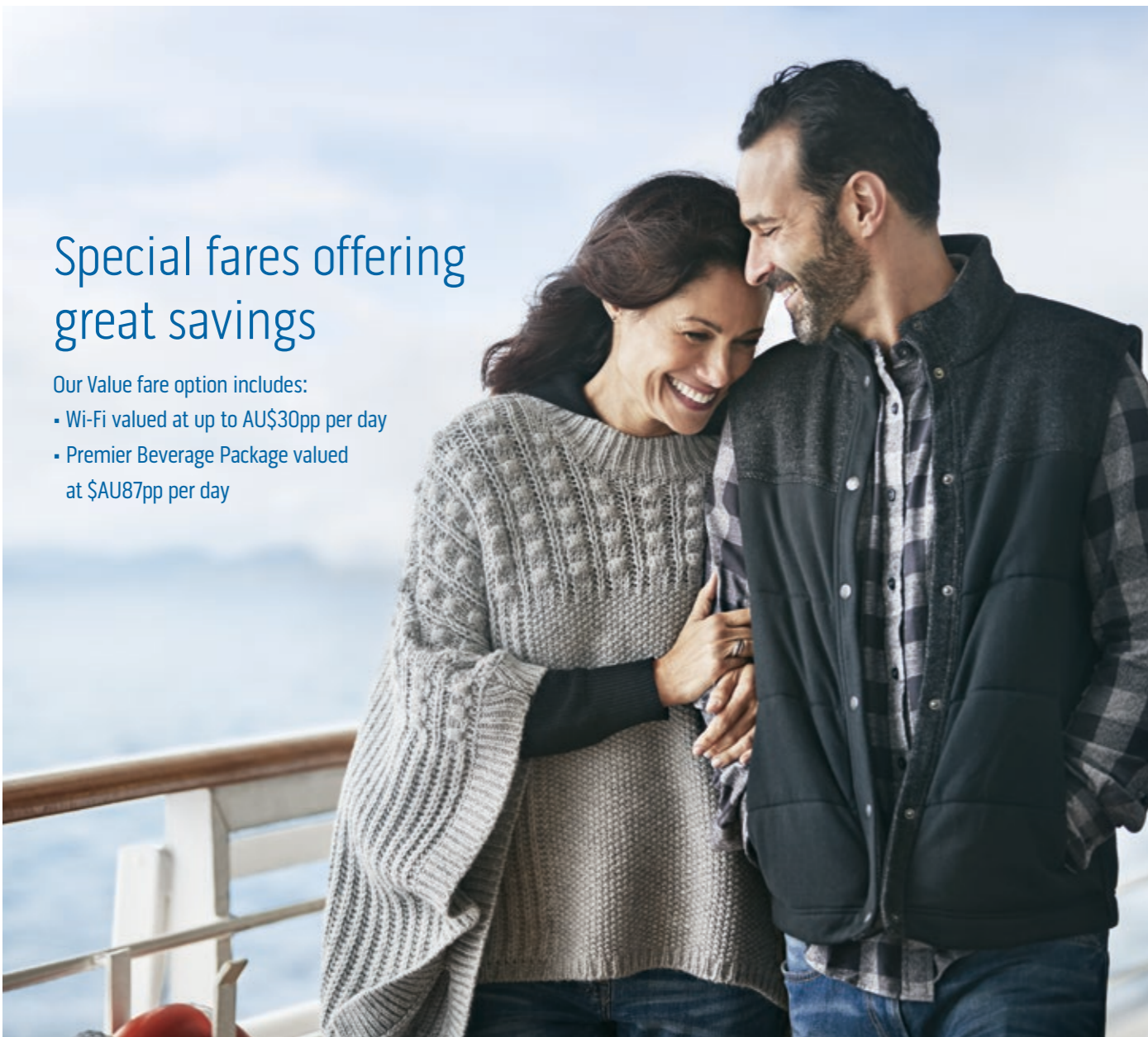
MAIDEN CALLS FOR SAPPHIRE PRINCESS®

Adelaide	Busselton	Geraldton	Kangaroo Island	Phillip Island
Albany	Dravuni Island	Great Oyster	Kimberley Coast	Port Arthur
Alotau	Exmouth	Bay & Freycinet	Lautoka	Port Lincoln
Broome	Fremantle	Peninsula	Nouméa	Savusavu

Special fares offering great savings

Our Value fare option includes:

- Wi-Fi valued at up to AU\$30pp per day
- Premier Beverage Package valued at \$AU87pp per day



SHIP FACTS

Sapphire Princess® comes early to Australia!

Indulge your every whim on Sapphire Princess®. With over 700 balconies, world-class gourmet dining and dazzling entertainment options you will be spoiled for choice.

On board Sapphire Princess® enjoy MedallionNet™, fast and reliable Wi-Fi at sea. Delivering connectivity that lets you stream your favourite shows, movies, music and sports, MedallionNet helps you stay connected to the internet everywhere on board.

DINING AND SNACKS

5 Main Dining Rooms: Santa Fe, Savoy, Vivaldi, Pacific Moon, International • Sabatini's™ Italian Restaurant • Sterling Steakhouse™ • Alfredo's Pizzeria • International Café • Horizon Court • Trident Grill • Prego Pizzeria • Swirls Ice Cream Bar • Chef's Table • Ultimate Balcony Dining • 24-hour Room Service

SHOWROOMS/LOUNGES/ENTERTAINMENT

Princess Theatre • Vines Wine Bar • Wheelhouse Bar • Explorer's Lounge • Bar Piazza • Wake View Bar • Tradewinds • Calypso Bar • The Mermaid's Tail Bar • Outrigger Bar • Club Fusion • Skywalkers Nightclub • Churchills • Movies Under the Stars® • Discovery at Sea Green Screen Experience • Bravo Production Show • Casino

RELAXATION, HEALTH AND WELLNESS

The Sanctuary • The Oasis • Lotus Spa and Fitness Centre • The Conservatory • Sports Deck • Sports Court

KIDS AND TEENS

2 Camp Discovery Youth and Teen Centres

ACCOMMODATION

Guest staterooms – 1,320 all featuring the Princess Luxury Bed

- 28 Suites
- 2 Family Suites with Interconnecting Staterooms
- 186 Mini-Suites
- 522 Balcony Staterooms
- 216 Oceanview Staterooms
- 366 Interior Staterooms
- 27 Wheelchair Accessible Staterooms



cruising to/from sydney

- Featuring popular itineraries from Sydney
- Sapphire Princess® makes several maiden calls – see page 2 for details
- Northern Explorer cruises between Sydney and Perth (Fremantle)
- Round Australia cruise returns
- More Getaways to enjoy with friends, family and have a relaxing break
- Head to the tropics to Fiji



Fiji
Roundtrip Sydney

12 nights

Sydney > Noumea > Dravuni Island > Suva > Savusavu > Lautoka > Sydney

	Interior*	Oceanview*	Balcony*	Mini-Suite*
VALUE	\$1,479	\$1,679	\$1,879	\$2,219
PRICE	\$999	\$1,199	\$1,349	\$1,599

2020 DEPARTURE | Jun 25 THU

*Fares are per person twin share.

Northern Explorer
Between Perth (Fremantle) and Sydney

17 nights

Perth (Fremantle) > Geraldton > Broome > Kimberley Coast Scenic Cruising > Darwin > Yorkeys Knob (for Cairns) > Alotau (Milne Bay) > Brisbane > Sydney

	Interior*	Oceanview*	Balcony*	Mini-Suite*
VALUE	\$1,979	\$2,239	\$2,479	\$2,809
PRICE	\$1,299	\$1,559	\$1,749	\$2,079

2020 DEPARTURES | Jun 8 MON | Jul 7* TUE | Aug 10 MON | Sept 19* SAT

*Fares based on 8/6/20 sailing, per person twin share. *Itinerary operates in reverse. More Ashore varies. #Itinerary and port order varies, visits Lombok instead of Alotau. More Ashore varies.

Round Australia
Roundtrip Sydney

30 nights

Sydney > Brisbane > Yorkeys Knob (for Cairns) > Darwin > Kimberley Coast (Scenic Cruising) > Lombok > Broome > Geraldton > Perth (Fremantle) > Margaret River (Busselton) > Albany > Adelaide > Kangaroo Island > Port Lincoln > Melbourne > Great Oyster Bay & Freycinet Peninsula (Scenic Cruising) > Hobart > Sydney

	Interior*	Oceanview*	Balcony*	Mini-Suite*
VALUE	\$4,799	\$6,059	\$7,069	\$8,499
PRICE	\$3,599	\$4,859	\$5,769	\$7,199

2020 DEPARTURE | Sep 19 SAT

*Fares are per person twin share. Also available: 26-night cruise sailing Sydney to Melbourne.

Australian Getaways

2 nights

PRICE		Interior*	Oceanview*	Balcony*	Mini-Suite*
Jun 23 TUE	Brisbane > Sydney	\$199	\$219	\$249	\$299
Sep 19 SAT	Sydney > Brisbane	\$299	\$359	\$399	\$479
Oct 19 MON	Sydney > Melbourne	\$249	\$299	\$339	\$399

*Fares are per person twin share.

Southern Australia and Tasmania
Adelaide to Sydney

6 & 8 nights

Adelaide > Kangaroo Island > Port Lincoln > Melbourne > Great Oyster Bay & Freycinet Peninsula (Scenic Cruising) > Hobart > Sydney

	Interior*	Oceanview*	Balcony*	Mini-Suite*
VALUE	\$1,169	\$1,339	\$1,499	\$1,709
PRICE	\$849	\$1,019	\$1,149	\$1,359

2020 DEPARTURES | Aug 27* THU 6 nights | Oct 11 SUN 8 nights

*Fares based on 11/10/20 sailing, per person twin share. *6-night itinerary operates in reverse and varies.

Southern Australia Explorer
Sydney to Perth (Fremantle)

11-13 nights

Sydney > Hobart > Port Arthur > Kangaroo Island > Adelaide > Albany > Margaret River (Busselton) > Perth (Fremantle)

	Interior*	Oceanview*	Balcony*	Mini-Suite*
VALUE	\$1,689	\$1,969	\$2,229	\$2,569
PRICE	\$1,249	\$1,529	\$1,739	\$2,079

2020 DEPARTURES | Aug 27 THU 11 nights | Sep 7* MON 12 nights | Oct 6* TUE 13 nights

*Fares based on 27/8/20 sailing, per person twin share. *Itinerary operates in reverse and varies.



Value fare includes • Wi-Fi valued at up to AU\$30pp per day • Premier Beverage Package valued at \$AU87pp per day

cruising to/from perth (fremantle)

- Largest ever deployment for WA guests
- Several new calls for Sapphire Princess® along Western Australia's coast
- Returning favourites include Northern Explorer between Perth (Fremantle) and Sydney or Brisbane
- Multiple sailings on Coral Coast roundtrip
- Two Round Australia cruises – roundtrip from Perth (Fremantle)
- Southern Australia itineraries offer opportunity to disembark in Adelaide, Melbourne and Sydney
- Choose a 3 or 4 night Getaway for a relaxing break

Coral Coast Roundtrip Perth (Fremantle) 8 or 10 nights




Perth (Fremantle) > Geraldton > Broome > Exmouth > Perth (Fremantle)

	Interior*	Oceanview*	Balcony*	Mini-Suite*
VALUE	\$919	\$1,039	\$1,149	\$1,309
PRICE	\$599	\$719	\$799	\$959

2020 DEPARTURES May 4 MON 8 nights May 12* TUE 10 nights May 25* MON 10 nights
Jul 27 MON* 10 nights

*Fares based on 4/5/20 sailing per person twin share. Higher fares may apply to other departures. *10 night itinerary operates in reverse and includes Kimberley Coast Scenic Cruising.

Northern Explorer Perth (Fremantle) to Sydney or Brisbane 15 or 17 nights




Perth (Fremantle) > Geraldton > Broome > Kimberley Coast (Scenic Cruising) > Darwin > Yorkeys Knob (for Cairns) > Alotau (Milne Bay) > Brisbane > Sydney

	Interior*	Oceanview*	Balcony*	Mini-Suite*
VALUE	\$1,979	\$2,239	\$2,479	\$2,809
PRICE	\$1,299	\$1,559	\$1,749	\$2,079

2020 DEPARTURES Jun 8 MON 17 nights Jul 7* TUE 17 nights Aug 10* MON 15 nights
Sep 19* SAT 17 nights

*Fares based on 8/6/20 sailing, per person twin share. Higher fares may apply to other departures. *15-night itinerary, disembark Brisbane. *Itinerary operates in reverse, and visits Lombok instead of Alotau. More Ashore and port order varies. *Itinerary operates in reverse. More ashore varies.

Southern Australia Getaway Adelaide to Perth (Fremantle) 5 nights



Adelaide > Albany > Margaret River (Busselton) > Perth (Fremantle)


	Interior*	Oceanview*	Balcony*	Mini-Suite*
VALUE	\$749	\$889	\$1,019	\$1,179
PRICE	\$549	\$689	\$799	\$959

2020 DEPARTURE Sep 7 MON

*Fares are per person twin share.



Western Australia Getaway Roundtrip Perth (Fremantle) 3 or 4 nights




Perth (Fremantle) > Albany > Margaret River (Busselton) > Perth (Fremantle)

	Interior*	Oceanview*	Balcony*	Mini-Suite*
3 nights*				
PRICE	\$249	\$269	\$299	\$369
4 nights				
PRICE	\$349	\$379	\$439	\$519

2020 DEPARTURES May 1 FRI 3 nights May 22 FRI 3 nights Jun 4 THU 4 nights
Jul 24* FRI 3 nights Aug 6 THU 4 nights

*Fares based on 1/5/20 3-night sailing. Fares and map based on the 4/6/20 4-night sailings, per person twin share. Higher fares may apply to other departures. *Itinerary varies and does not visit Albany.

Round Australia Roundtrip from Perth (Fremantle) 28 or 29 nights




Perth (Fremantle) > Geraldton > Broome > Kimberley Coast (Scenic Cruising) > Darwin > Yorkeys Knob (for Cairns) > Alotau (Milne Bay) > Brisbane > Sydney > Port Arthur > Hobart > Kangaroo Island > Adelaide > Albany > Margaret River (Busselton) > Perth (Fremantle)

	Interior*	Oceanview*	Balcony*	Mini-Suite*
28 nights				
VALUE	\$4,369	\$5,049	\$5,619	\$6,419
PRICE	\$3,249	\$3,929	\$4,399	\$5,199
29 nights*				
VALUE	\$4,659	\$5,879	\$6,859	\$8,259
PRICE	\$3,499	\$4,719	\$5,599	\$6,999

2020 DEPARTURES Aug 10 MON 28 nights Sep 7* THU 29 nights

*Fares are per person twin share. *29-night itinerary operates in reverse and visits Port Lincoln. Lombok replaces Alotau. More Ashore and port order varies.

Southern Australia Explorer Perth (Fremantle) to Sydney 12 nights



Perth (Fremantle) > Margaret River (Busselton) > Albany > Adelaide > Port Lincoln > Kangaroo Island > Port Arthur > Hobart > Sydney


	Interior*	Oceanview*	Balcony*	Mini-Suite*
VALUE	\$1,779	\$2,099	\$2,479	\$2,799
PRICE	\$1,299	\$1,619	\$1,949	\$2,269

2020 DEPARTURE Sep 7 MON

*Fares are per person twin share. Option to disembark in Brisbane as a 14-night sailing is also available. Higher fares may apply to other sailings.



Southern Australia Explorer Perth (Fremantle) to Sydney 13 nights



Perth (Fremantle) > Margaret River (Busselton) > Albany > Adelaide > Kangaroo Island > Port Lincoln > Melbourne > Great Oyster Bay & Freycinet Peninsula (Scenic Cruising) > Hobart > Sydney

	Interior*	Oceanview*	Balcony*	Mini-Suite*
VALUE	\$2,019	\$2,389	\$2,819	\$3,189
PRICE	\$1,499	\$1,869	\$2,249	\$2,619

2020 DEPARTURE Oct 6 TUE

*Fares are per person twin share. Option to disembark in Melbourne as a 9-night sailing is also available.



Value fare includes • Wi-Fi valued at up to AU\$30pp per day • Premier Beverage Package valued at \$AU87pp per day

cruising to/from adelaide

- **NEW** Round Australia roundtrip cruise from Adelaide
- Southern Australia and Tasmania cruises – perfect for a short holiday
- Getaway cruises ideal for families, friends and connecting with loved ones



hobart



sydney

Round Australia Roundtrip Adelaide

29 nights

More Ashore

Adelaide > Port Lincoln > Kangaroo Island > Port Arthur > Hobart > Sydney > Brisbane > Yorkeys Knob (for Cairns) > Darwin > Kimberley Coast (Scenic Cruising) > Lombok > Broome > Geraldton > Perth (Fremantle) > Margaret River (Busselton) > Albany > Adelaide

	Interior*	Oceanview*	Balcony*	Mini-Suite*
VALUE	\$4,659	\$5,859	\$6,859	\$8,259
PRICE	\$3,499	\$4,699	\$5,599	\$6,999

2020 DEPARTURE | Sep 12 SAT

*Fares are per person twin share. 24-night option available Adelaide and Perth (Fremantle).

Southern Australia and Tasmania Sydney to Adelaide

6 nights

Sydney > Hobart > Port Arthur > Kangaroo Island > Adelaide

	Interior*	Oceanview*	Balcony*	Mini-Suite*
VALUE	\$939	\$1,079	\$1,199	\$1,379
PRICE	\$699	\$839	\$939	\$1,119

2020 DEPARTURE | Aug 27 THU

*Fares are per person twin share.

Southern Australia Explorer Sydney to Adelaide

7 nights

More Ashore

Sydney > Melbourne > Phillip Island > Port Lincoln > Kangaroo Island > Adelaide

	Interior*	Oceanview*	Balcony*	Mini-Suite*
VALUE	\$1,079	\$1,279	\$1,509	\$1,709
PRICE	\$799	\$999	\$1,199	\$1,399

2020 DEPARTURE | Oct 19 MON

*Fares are per person twin share.

Southern Australia and Tasmania Adelaide to Sydney

8 nights

Adelaide > Kangaroo Island > Port Lincoln > Melbourne > Great Oyster Bay & Freycinet Peninsula (Scenic Cruising) > Hobart > Sydney

	Interior*	Oceanview*	Balcony*	Mini-Suite*
VALUE	\$1,169	\$1,339	\$1,499	\$1,709
PRICE	\$849	\$1,019	\$1,149	\$1,359

2020 DEPARTURE | Oct 11 SUN

*Fares are per person twin share.

Southern Australia Getaway Adelaide to Perth (Fremantle)

5 nights

Adelaide > Albany > Margaret River (Busselton) > Perth (Fremantle)

	Interior*	Oceanview*	Balcony*	Mini-Suite*
VALUE	\$749	\$889	\$1,019	\$1,179
PRICE	\$549	\$689	\$799	\$959

2020 DEPARTURES | Sep 2 WED | Sep 7 MON

*Fares based on 2/9/20 Adelaide to Perth sailing per person twin share. Itinerary varies: Perth (Fremantle) to Adelaide. Higher fares may apply to other departures.

Australian Getaway

2 nights

PRICE		Interior*	Oceanview*	Balcony*	Mini-Suite*
Oct 26 MON	Adelaide > Melbourne	\$299	\$399	\$449	\$549

*Fares are per person twin share.



melbourne



freycinet peninsula

Value fare includes • Wi-Fi valued at up to AU\$30pp per day • Premier Beverage Package valued at \$AU87pp per day

cruising to/from melbourne

- Round Australia cruise with a Sydney to Melbourne itinerary
- Tasmania roundtrip Melbourne cruises
- Short Getaway cruises to share with loved ones and have time together including cruises Sydney to Melbourne or Melbourne to Adelaide
- Take a refreshing week break and explore South Australia and Philip Island



adelaide

Round Australia Sydney to Melbourne

26 nights

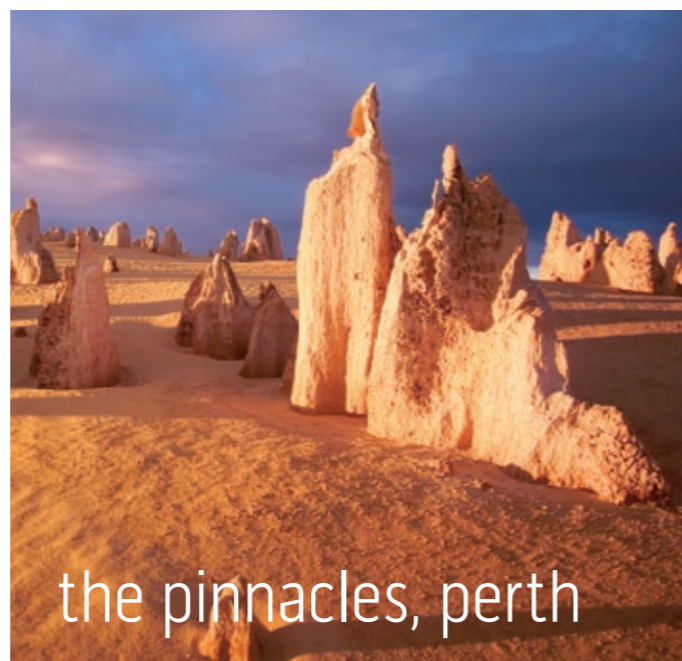
More Ashore

Sydney > Brisbane > Yorkeys Knob (for Cairns) > Darwin > Kimberley Coast (Scenic Cruising) > Lombok > Broome > Geraldton > Perth (Fremantle) > Margaret River (Busselton) > Albany > Adelaide > Kangaroo Island > Port Lincoln > Melbourne

	Interior*	Oceanview*	Balcony*	Mini-Suite*
VALUE	\$4,139	\$5,249	\$6,139	\$7,409
PRICE	\$3,099	\$4,209	\$4,999	\$6,269

2020 DEPARTURE | Sep 19 SAT

*Fares are per person twin share.



the pinnacles, perth

Tasmania Roundtrip Melbourne

6 nights

Melbourne > Great Oyster Bay & Freycinet Peninsula (Scenic Cruising) > Hobart > Sydney > Melbourne

	Interior*	Oceanview*	Balcony*	Mini-Suite*
VALUE	\$989	\$1,179	\$1,379	\$1,569
PRICE	\$749	\$939	\$1,119	\$1,309

2020 DEPARTURE | Oct 15 THU

*Fares are per person twin share.

Southern Australia Explorer Roundtrip Melbourne

7 nights

More Ashore

Melbourne > Phillip Island > Port Lincoln > Kangaroo Island > Adelaide > Melbourne

	Interior*	Oceanview*	Balcony*	Mini-Suite*
VALUE	\$1,179	\$1,399	\$1,659	\$1,879
PRICE	\$899	\$1,119	\$1,349	\$1,569

2020 DEPARTURE | Oct 21 WED

*Fares are per person twin share.

cruising to/from brisbane

- Popular Northern Explorer itinerary Brisbane to Perth (Fremantle)
- **NEW** Southern States cruise visiting Sydney, Tasmania, South Australia and Western Australia's southern ports
- Getaway cruises – perfect for a relaxing break – take the kids, grandparents or friends and enjoy the delights of Sapphire Princess®
- Visit dreamy South Pacific ports and spend lazy days on board

Australian Getaways

2 nights

PRICE		Interior*	Oceanview*	Balcony*	Mini-Suite*
Jun 23 TUE	Brisbane > Sydney	\$199	\$219	\$249	\$299
Sep 19 SAT	Sydney > Brisbane	\$299	\$359	\$399	\$479

*Fares are per person twin share.

Fiji Roundtrip Brisbane

16 nights

Brisbane > Sydney > Noumea > Dravuni Island > Suva > Savusavu > Lautoka > Sydney > Brisbane

	Interior*	Oceanview*	Balcony*	Mini-Suite*
VALUE	\$1,939	\$2,199	\$2,439	\$2,769
PRICE	\$1,299	\$1,559	\$1,749	\$2,079

2020 DEPARTURE | Jun 23 TUE

*Fares are per person twin share.

Northern Explorer Brisbane to Perth (Fremantle)

15 nights

More Ashore

Brisbane > Yorkeys Knob (for Cairns) > Alotau (Milne Bay) > Darwin > Kimberley Coast (Scenic Cruising) > Broome > Geraldton > Perth (Fremantle)

	Interior*	Oceanview*	Balcony*	Mini-Suite*
VALUE	\$2,099	\$2,399	\$2,649	\$3,049
PRICE	\$1,499	\$1,799	\$1,999	\$2,399

2020 DEPARTURES | Jul 9 THU | Sep 21 MON

*Fares based on 9/7/20 sailing, per person twin share. Higher fares may apply to other departures. *Itinerary varies, visits Lombok instead of Alotau. More Ashore and port order varies.

Southern Australia Explorer Brisbane to Perth (Fremantle)

14 nights

Brisbane > Sydney > Hobart > Port Arthur > Kangaroo Island > Adelaide > Albany > Margaret River (Busselton) > Perth (Fremantle)

	Interior*	Oceanview*	Balcony*	Mini-Suite*
VALUE	\$1,999	\$2,329	\$2,569	\$3,029
PRICE	\$1,479	\$1,809	\$1,999	\$2,459

2020 DEPARTURE | Aug 25 TUE

*Fares are per person twin share.



fiji

Value fare includes • Wi-Fi valued at up to AU\$30pp per day • Premier Beverage Package valued at \$AU87pp per day

Departs Cruise Nights

Itinerary

Cruising to/from Sydney			
8 Jun	H016E	16	Northern Explorer Perth (Fremantle) > Geraldton > Broome > Kimberley Coast Scenic Cruising > Darwin > Yorkeys Knob > Alotau (Milne Bay) > Brisbane > Sydney
23 Jun	H017N	2	Australian Getaway Brisbane > Sydney
25 Jun	H018N	12	Fiji Sydney > Noumea > Dravuni Island > Suva > Savusavu > Lautoka > Sydney > Brisbane
7 Jul	H019N	17	Northern Explorer Sydney > Brisbane > Yorkeys Knob (for Cairns) > Alotau (Milne Bay) > Darwin > Kimberley Coast (Scenic Cruising) > Broome > Geraldton > Perth (Fremantle)
10 Aug	H023N	17	Northern Explorer Perth (Fremantle) > Geraldton > Broome > Kimberley Coast (Scenic Cruising) > Darwin > Yorkeys Knob (for Cairns) > Alotau (Milne Bay) > Brisbane > Sydney
27 Aug	H024N	6	Southern Australia Explorer Sydney > Hobart > Port Arthur > Kangaroo Island > Adelaide
27 Aug	H024C	11	Southern Australia Explorer Sydney > Hobart > Port Arthur > Kangaroo Island > Adelaide > Albany > Margaret River (Busselton) > Perth (Fremantle)
7 Sep	H026E	12	Southern Australia Explorer Perth (Fremantle) > Margaret River (Busselton) > Albany > Adelaide > Port Lincoln > Kangaroo Island > Port Arthur > Hobart > Sydney
19 Sep	H028N	2	Australian Getaway Sydney > Brisbane
19 Sep	H028C	30	Round Australia Sydney > Brisbane > Yorkeys Knob (for Cairns) > Darwin > Kimberley Coast (Scenic Cruising) > Lombok > Broome > Geraldton > Perth (Fremantle) > Margaret River (Busselton) > Albany > Adelaide > Kangaroo Island > Port Lincoln > Melbourne > Great Oyster Bay & Freycinet Peninsula (Scenic Cruising) > Hobart > Sydney
19 Sep	H028D	26	Round Australia Sydney > Brisbane > Yorkeys Knob (for Cairns) > Darwin > Kimberley Coast (Scenic Cruising) > Lombok > Broome > Geraldton > Perth (Fremantle) > Margaret River (Busselton) > Albany > Adelaide > Kangaroo Island > Port Lincoln > Melbourne
19 Sep	H028E	17	Northern Explorer Sydney > Brisbane > Yorkeys Knob (for Cairns) > Darwin > Kimberley Coast (Scenic Cruising) > Lombok > Broome > Geraldton > Perth (Fremantle)
6 Oct	H030C	13	Southern Australia Explorer Perth (Fremantle) > Margaret River (Busselton) > Albany > Adelaide > Kangaroo Is. > Pt. Lincoln > Melbourne > Great Oyster Bay & Freycinet Peninsula (Scenic Cruising) > Hobart > Sydney
11 Oct	H031C	8	Southern Australia & Tasmania Adelaide > Kangaroo Island > Port Lincoln > Melbourne > Great Oyster Bay & Freycinet Peninsula (Scenic Cruising) > Hobart > Sydney
15 Oct	H032N	4	Australian Getaway Melbourne > Great Oyster Bay & Freycinet Peninsula (Scenic Cruising) > Hobart > Sydney
19 Oct	H033N	2	Australian Getaway Sydney > Melbourne
19 Oct	H033C	7	Southern Australia Explorer Sydney > Melbourne > Phillip Island > Port Lincoln > Kangaroo Island > Adelaide
Cruising to/from Perth (Fremantle)			
1 May	H013N	3	Western Australia Getaway Perth (Fremantle) > Margaret River (Busselton) > Perth (Fremantle)
4 May	H014N	8	Coral Coast Perth (Fremantle) > Geraldton > Broome > Exmouth > Perth (Fremantle)
12 May	H015N	10	Coral Coast Perth (Fremantle) > Exmouth > Kimberley Coast Scenic Cruising > Broome > Geraldton > Perth (Fremantle)
22 May	H016N	3	Western Australia Getaway Perth (Fremantle) > Margaret River (Busselton) > Perth (Fremantle)
25 May	H016P	10	Coral Coast Perth (Fremantle) > Exmouth > Kimberley Coast Scenic Cruising > Broome > Geraldton > Perth (Fremantle)
4 Jun	H016Q	4	Western Australia Getaway Perth (Fremantle) > Margaret River (Busselton) > Perth (Fremantle)
8 Jun	H016R	15	Northern Explorer Perth (Fremantle) > Geraldton > Broome > Kimberley Coast Scenic Cruising > Darwin > Yorkeys Knob > Alotau (Milne Bay) > Brisbane
8 Jun	H016E	16	Northern Explorer Perth (Fremantle) > Geraldton > Broome > Kimberley Coast Scenic Cruising > Darwin > Yorkeys Knob > Alotau (Milne Bay) > Brisbane > Sydney
7 Jul	H019N	17	Northern Explorer Sydney > Brisbane > Yorkeys Knob (for Cairns) > Alotau (Milne Bay) > Darwin > Kimberley Coast (Scenic Cruising) > Broome > Geraldton > Perth (Fremantle)
9 Jul	H019C	15	Northern Explorer Brisbane > Yorkeys Knob (for Cairns) > Alotau (Milne Bay) > Darwin > Kimberley Coast (Scenic Cruising) > Broome > Geraldton > Perth (Fremantle)
24 Jul	H020N	3	Western Australia Getaway Perth (Fremantle) > Margaret River (Busselton) > Perth (Fremantle)
27 Jul	H021N	10	Coral Coast Perth (Fremantle) > Exmouth > Kimberley Coast (Scenic Cruising) > Broome > Geraldton > Perth (Fremantle)
6 Aug	H022N	4	Western Australia Getaway Perth (Fremantle) > Margaret River (Busselton) > Albany > Perth (Fremantle)
10 Aug	H023D	15	Northern Explorer Perth (Fremantle) > Geraldton > Broome > Kimberley Coast (Scenic Cruising) > Darwin > Yorkeys Knob (for Cairns) > Alotau (Milne Bay) > Brisbane
10 Aug	H023N	17	Northern Explorer Perth (Fremantle) > Geraldton > Broome > Kimberley Coast (Scenic Cruising) > Darwin > Yorkeys Knob (for Cairns) > Alotau (Milne Bay) > Brisbane > Sydney
10 Aug	H023C	28	Round Australia Perth (Fremantle) > Geraldton > Broome > Kimberley Coast (Scenic Cruising) > Darwin > Yorkeys Knob (for Cairns) > Alotau (Milne Bay) > Brisbane > Sydney > Port Arthur > Hobart > Kangaroo Island > Adelaide > Albany > Margaret River (Busselton) > Perth (Fremantle)
25 Aug	H023E	13	Southern Australia Explorer Brisbane > Sydney > Hobart > Port Arthur > Kangaroo Island > Adelaide > Albany > Margaret River (Busselton) > Perth (Fremantle)
27 Aug	H024C	11	Southern Australia Explorer Sydney > Hobart > Port Arthur > Kangaroo Island > Adelaide > Albany > Margaret River (Busselton) > Perth (Fremantle)
2 Sep	H025N	5	Southern Australia Getaway Adelaide > Albany > Margaret River (Busselton) > Perth (Fremantle)
7 Sep	H026N	5	Southern Australia Getaway Perth (Fremantle) > Margaret River (Busselton) > Albany > Adelaide
7 Sep	H026C	29	Round Australia Perth (Fremantle) > Margaret River (Busselton) > Albany > Adelaide > Port Lincoln > Kangaroo Island > Port Arthur > Hobart > Sydney > Brisbane > Yorkeys Knob (for Cairns) > Darwin > Kimberley Coast (Scenic Cruising) > Lombok > Broome > Geraldton > Perth (Fremantle)
7 Sep	H026E	12	Southern Australia Explorer Perth (Fremantle) > Margaret River (Busselton) > Albany > Adelaide > Port Lincoln > Kangaroo Island > Port Arthur > Hobart > Sydney
7 Sep	H026D	14	Southern Australia Explorer Perth (Fremantle) > Margaret River (Busselton) > Albany > Adelaide > Port Lincoln > Kangaroo Island > Port Arthur > Hobart > Sydney > Brisbane
19 Sep	H028E	17	Northern Explorer Sydney > Brisbane > Yorkeys Knob (for Cairns) > Darwin > Kimberley Coast (Scenic Cruising) > Lombok > Broome > Geraldton > Perth (Fremantle)
21 Sep	H029N	15	Northern Explorer Brisbane > Yorkeys Knob (for Cairns) > Darwin > Kimberley Coast (Scenic Cruising) > Lombok > Broome > Geraldton > Perth (Fremantle)
6 Oct	H030C	13	Southern Australia Explorer Perth (Fremantle) > Margaret River (Busselton) > Albany > Adelaide > Kangaroo Is. > Pt. Lincoln > Melbourne > Great Oyster Bay & Freycinet Peninsula (Scenic Cruising) > Hobart > Sydney
6 Oct	H030D	9	Southern Australia Explorer Perth (Fremantle) > Margaret River (Busselton) > Albany > Adelaide > Kangaroo Island > Port Lincoln > Melbourne
Cruising to/from Adelaide			
27 Aug	H024N	6	Southern Australia Explorer Sydney > Hobart > Port Arthur > Kangaroo Island > Adelaide
2 Sep	H025N	5	Southern Australia Getaway Adelaide > Albany > Margaret River (Busselton) > Perth (Fremantle)
7 Sep	H026N	5	Southern Australia Getaway Perth (Fremantle) > Margaret River (Busselton) > Albany > Adelaide
12 Sep	H027C	29	Round Australia Adelaide > Port Lincoln > Kangaroo Island > Port Arthur > Sydney > Brisbane > Yorkeys Knob (for Cairns) > Darwin > Kimberley Coast (Scenic Cruising) > Lombok > Broome > Geraldton > Perth (Fremantle) > Margaret River (Busselton) > Albany > Adelaide
12 Sep	H027D	24	Round Australia Adelaide > Port Lincoln > Kangaroo Island > Port Arthur > Hobart > Sydney > Brisbane > Yorkeys Knob (for Cairns) > Darwin > Kimberley Coast (Scenic Cruising) > Lombok > Broome > Geraldton > Perth (Fremantle)
11 Oct	H031N	4	Southern Australia Getaway Adelaide > Kangaroo Island > Port Lincoln > Melbourne
11 Oct	H031C	8	Southern Australia & Tasmania Adelaide > Kangaroo Island > Port Lincoln > Melbourne > Great Oyster Bay & Freycinet Peninsula (Scenic Cruising) > Hobart > Sydney
19 Oct	H033C	7	Southern Australia Explorer Sydney > Melbourne > Phillip Island > Port Lincoln > Kangaroo Island > Adelaide
21 Oct	H034N	5	Southern Australia Getaway Melbourne > Phillip Island > Port Lincoln > Kangaroo Island > Adelaide
26 Oct	H035N	2	Australian Getaway Adelaide > Melbourne
Cruising to/from Melbourne			
19 Sep	H028D	26	Round Australia Sydney > Brisbane > Yorkeys Knob (for Cairns) > Darwin > Kimberley Coast (Scenic Cruising) > Lombok > Broome > Geraldton > Perth (Fremantle) > Margaret River (Busselton) > Albany > Adelaide > Kangaroo Island > Port Lincoln > Melbourne
11 Oct	H031N	4	Southern Australia Getaway Adelaide > Kangaroo Island > Port Lincoln > Melbourne
15 Oct	H032N	4	Australian Getaway Melbourne > Great Oyster Bay & Freycinet Peninsula (Scenic Cruising) > Hobart > Sydney
15 Oct	H032C	6	Tasmania Melbourne > Great Oyster Bay & Freycinet Peninsula (Scenic Cruising) > Hobart > Sydney > Melbourne
19 Oct	H033N	2	Australian Getaway Sydney > Melbourne
21 Oct	H034N	5	Southern Australia Getaway Melbourne > Phillip Island > Port Lincoln > Kangaroo Island > Adelaide
21 Oct	H034C	7	Southern Australia Explorer Melbourne > Phillip Island > Port Lincoln > Kangaroo Island > Adelaide > Melbourne
26 Oct	H035N	2	Australian Getaway Adelaide > Melbourne
Cruising to/from Brisbane			
8 Jun	H016R	15	Northern Explorer Perth (Fremantle) > Geraldton > Broome > Kimberley Coast Scenic Cruising > Darwin > Yorkeys Knob > Alotau (Milne Bay) > Brisbane
23 Jun	H017N	2	Australian Getaway Brisbane > Sydney
23 Jun	H017C	16	Fiji Brisbane > Sydney > Noumea > Dravuni Island > Suva > Savusavu > Lautoka > Sydney > Brisbane
9 Jul	H019C	15	Northern Explorer Brisbane > Yorkeys Knob (for Cairns) > Alotau (Milne Bay) > Darwin > Kimberley Coast (Scenic Cruising) > Broome > Geraldton > Perth (Fremantle)
10 Aug	H023D	15	Northern Explorer Perth (Fremantle) > Geraldton > Broome > Kimberley Coast (Scenic Cruising) > Darwin > Yorkeys Knob (for Cairns) > Alotau (Milne Bay) > Brisbane
10 Aug	H023N	17	Northern Explorer Perth (Fremantle) > Geraldton > Broome > Kimberley Coast (Scenic Cruising) > Darwin > Yorkeys Knob (for Cairns) > Alotau (Milne Bay) > Brisbane > Sydney
25 Aug	H023E	14	Southern Australia Explorer Brisbane > Sydney > Port Arthur > Hobart > Kangaroo Island > Adelaide > Albany > Margaret River (Busselton) > Perth (Fremantle)
19 Sep	H028N	2	Australian Getaway Sydney > Brisbane
21 Sep	H029N	15	Northern Explorer Brisbane > Yorkeys Knob (for Cairns) > Darwin > Kimberley Coast (Scenic Cruising) > Lombok > Broome > Geraldton > Perth (Fremantle)

*Fares are cruise only, per person, in AUD, in complete twin accommodation, inclusive of all taxes, government fees and charges (which are subject to change), based on the lead category for each stateroom type. While a reasonable allocation of staterooms has been set aside at these fares, if the allocation is sold out the fares may no longer be available. Valid for new bookings and not combinable with any other offer. Fares subject to availability. Contact Princess Cruises® for single berth, third-fourth berth, Club Class, Mini-suite and Suite fares. Fares are available in Australia only. We accept Visa, MasterCard, AMEX or Diners. A credit card surcharge of 1.1% for Visa and Mastercard and 2.3% for AMEX and Diners Club will apply to direct bookings made through our website or call centre. Paypal payments incur a 1% surcharge. There is no charge for BPAY or debit card payments. See princess.com for booking and passage terms and conditions which guests will be bound by. While all information is correct at time of publication. Offers subject to change or withdrawal. Carnival pit trading as Princess Cruises®. ABN 23 107 998 443. Issued February 2020. PO Box 1429, Chatswood NSW 2057 ©Princess Cruises 2020. Ships of Bermudan registry.